

Construction Staging Schedule:

2018 Hwy 22 Area 1 Construction

A roundabout will be constructed at the intersection of Highway 22 and County Road 90/ 195th Street. Hwy 22 will have a mill and overlay completed from 195th Street south to 185th Street.

2018 Hwy 22 Area 2 Construction

Hwy 22 will be under construction from Beauford north to the intersection of County Road 15/ 185th Street. This will include a full highway reconstruction with left turn lanes at key intersections.

2017 Hwy 22 Area 3 Construction

Hwy 22 will be under construction from Beauford south to Mapleton. This will include a full highway reconstruction with left turn lanes at key intersections and a new Cobb River Bridge, located just south of Beauford.

Landscape Memorial Improvements

The Victory Drive landscape memorial improvements will be installed in 2019 or earlier following the completion of the road improvement projects.

The Victory Drive landscape memorial improvements are currently in the planning and design stage and may include native wildflowers, grasses and tree plantings along with considerations for built memorial elements along the corridor, at the gateways to the corridor and within the Mapleton Wayside Memorial Park.

The existing salvaged Victory Drive memorial plaque will be relocated to the Mapleton Wayside Memorial Park as part of the improvements.



Project Contacts

Robert Jones, Project Manager
MnDOT - D7
2151 Bassett Drive
Mankato, MN 56001
Robert.Jones@state.mn.us

Candace Amberg, RLA
WSB & Associates, Inc.
701 Xenia Ave. South, Suite 300
Minneapolis, MN 55416
camberg@wsbeng.com

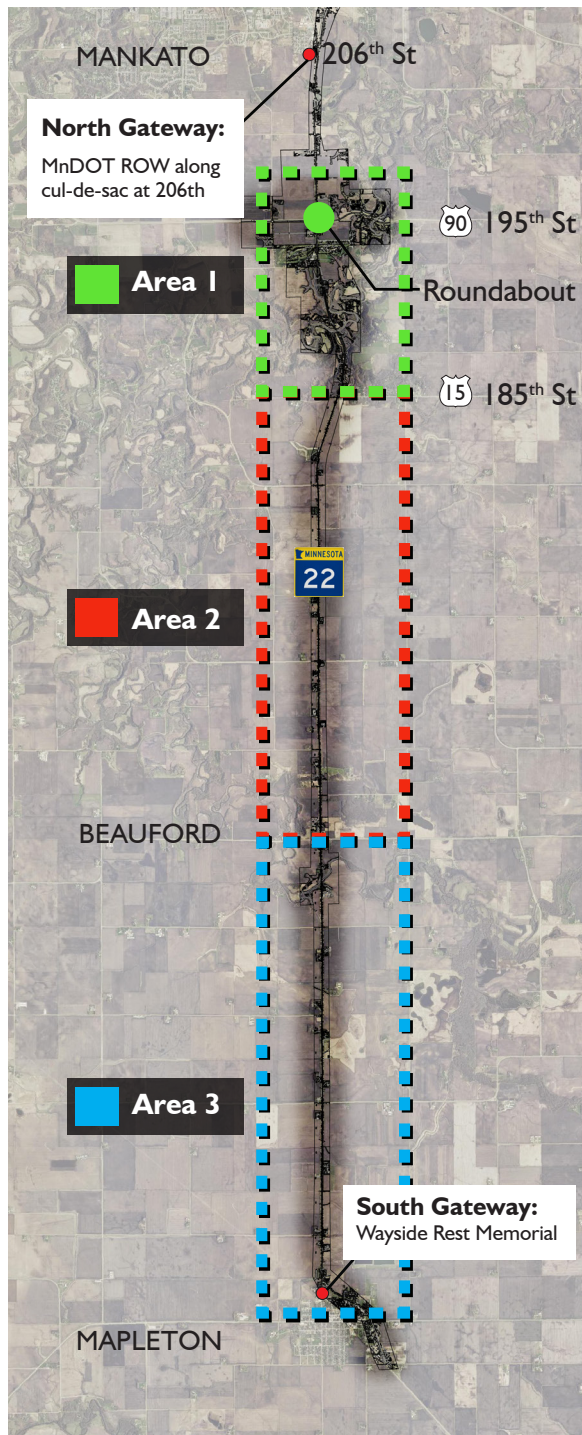


HWY 22 VICTORY DRIVE MEMORIAL CORRIDOR

Hwy 22 from Mankato to Mapleton

Honoring Our Local Veterans Since 1948





What is the Hwy 22 Victory Drive Memorial Corridor?

Highway 22 starting in Mankato at the intersection of Highways 14 & 60 and extending south to Mapleton was designated as "Victory Drive" following WWII in honor of local veterans. The local community, including the Mankato Garden Club, Maple River High School students, numerous volunteers, MnDOT, and countless others have contributed to the tree plantings that are located along this section of highway since 1948 as a means to beautify the corridor with a living memorial to honor local veterans.



The 2017-2018 Highway 22 Road Improvement Project includes reconstructing the highway to meet current design and safety standards which will result in the removal of over 600 trees along this corridor. The Victory Drive landscape memorial project will take place in 2019 or earlier and is meant to continue to honor the legacy and history of this corridor in a manner that is respectful of the memorial design intent while working within the current constraints of the corridor. MnDOT is seeking input from the community to help establish the overall vision for the future memorial corridor and is also seeking project partners and champions to help see that the vision is implemented.

How can I be involved?

- Step 1: Provide your input!** Let us know your ideas, concerns and what you think the best design approach is and be sure to continually track the project on the MnDOT website.
- Step 2: Raise Awareness!** Reach out and get more people involved to share the knowledge and history of this memorial corridor.
- Step 3: Become a Project Champion!** Donate and/or help raise funds to contribute to the beautification of the memorial corridor so the overall vision can become a reality. We are also looking for someone to help spearhead and organize the collection of donations.

